



WHIRL-PAK®
Filtration Group



THIO-BAGS

7 SIZES AVAILABLE



WHIRL-PAK® THIO-BAG®



TRUSTED, PUNCTURE-PROOF CLOSURE TABS

- tape extends beyond wire to eliminate sharp ends and provide a sturdy grip
- wire tabs hold the top open for easy access to add to or remove sample
- worry-free, no-leak closure for sample integrity

OPENING PULL TABS

- for easy opening
- non-slip textured Tyvek®

CONVENIENT WRITE-ON STRIP

- makes labeling quick and easy
- clear sample identification
- for organization & traceability

GUSSETED BAG BOTTOMS FOR SELF-STANDING

- no need for expensive and bulky bottles
- allows user to perform functions with both hands

+1

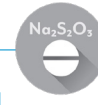
POST-MANUFACTURING STERILIZATION

- increased sample integrity
- perforated closure to maintain sterility



BLENDED, VIRGIN POLYETHYLENE FILM

- exceptional clarity
- superior strength
- sterilized after manufacturing
- FDA approved for contact



THE TABLET IS ALREADY IN THERE

- manufactured with a sodium thiosulfate tablet in the bag for chlorine neutralization

efficient and *sustainable* microbiological water sampling solution



smarter sustainability

Whirl-Pak® Thio-Bags® deliver a cost effective, low environmental impact alternative to rigid material containers.

Whirl-Pak® sterilized sampling bags are R-Nase, D-Nase, Pyrogen and BPH free and comply with regulatory and industrial requirements:





500 BAGS VS. 500 BOTTLES

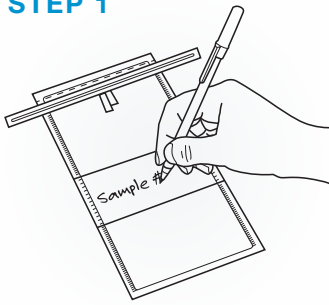
GUARANTEED STERILE
Manufactured according to
quality management systems
ISO9001:2015

- o Uses less shelf space
- o Easier disposal
- o Durable
- o Lower shipping costs
- o Built-in closure
- o Lower total cost



SOLIDS OR LIQUIDS - LEAK-PROOF CLOSURE

STEP 1



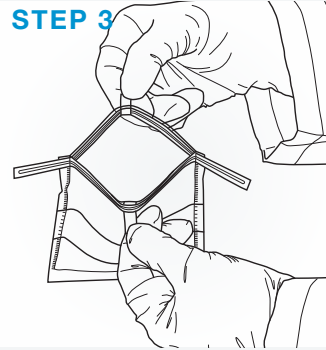
Label your sample if using a write-on bag.

STEP 2



To open, tear off the top along the perforation.

STEP 3



Use the Tyvek® pull tabs to open without contamination.

STEP 4



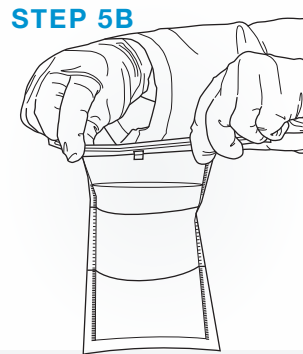
Place sample in bag. Perfect for liquids or solids.

STEP 5A



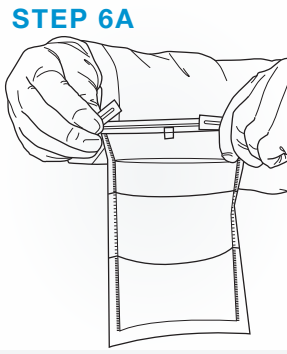
Hold bag by the tabs and whirl 3 to 4 times to create a seal.

STEP 5B



Or, fold the tab over tightly 3 to 4 times to close.

STEP 6A



Secure closure, bend wire ends for solids.

STEP 6B



Or, bring the two wire ends together to twist, tie and tuck!

TO LEARN MORE **CONTACT**



WHIRL-PAK®
Filtration Group



whirl-pak.com



+1.920.568.5616



contact@whirl-pak.com